

AMFM GIS Italia Workshop 2014

Project Officers:
Athanasios Karalopoulos
Vassilios Peristeras

ISA program – Interoperability Solutions for European Public Administrations

Action 1.17: ARE3NA
A re-usable INSPIRE Reference Platform

Action 2.13: EULF
European Union Location Framework

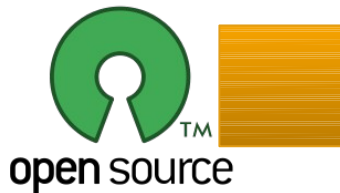
Develop and share reusable components that both aid INSPIRE implementation and foster cross-sector interoperability

- Establish a collaborative platform & help share best practices

joinup



- INSPIRE implementation software inventory, including Open Source tools**

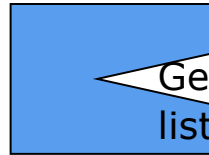
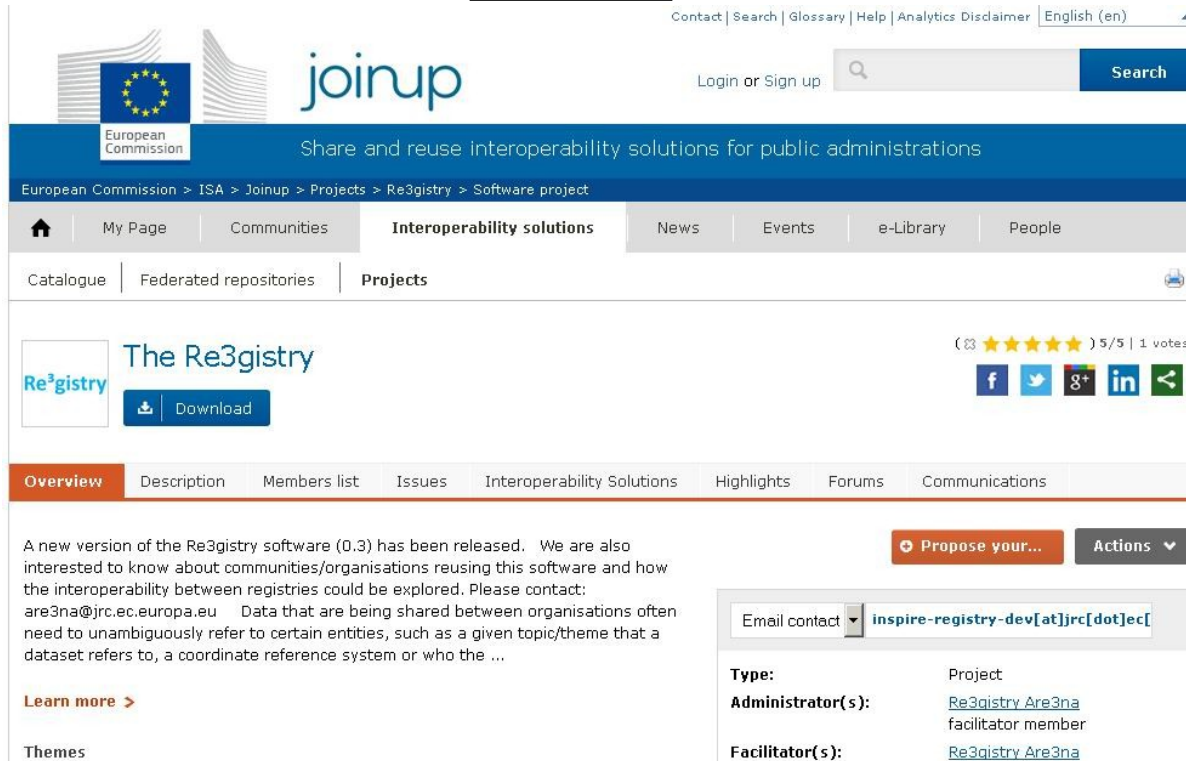


- Identify other policies & platforms dealing with spatial data exchange**



- Identify 'missing items' in INSPIRE and between INSPIRE & other sectors**



The screenshot shows the Re3gistry software project page on the JoinUp platform. The page includes a header with the European Commission logo and the JoinUp logo. The main content area features a navigation bar with tabs for Overview, Description, Members list, Issues, Interoperability Solutions, Highlights, Forums, and Communications. The Overview tab is selected, displaying a description of the software and a list of themes. A 'Propose your...' button is visible, along with a form for email contact and a list of administrators and facilitators.



INSPIRE - Infrastructure for Spatial Information in Europe

Re3gistry software v0.4

Title	Re3gistry software v0.4
Creator	European Commission, Joint Research Centre
Creation Date	---
Subject	Re3gistry software
Status	Version 0.4
Publisher	European Commission
Type	Text
Description	This document describes the Re3gistry software's details and installation instruction
Format	MS Word (docx)
Source	Existing Re3gistry software documentation 0.3
Rights	Reuse is authorised, provided the source is acknowledged. The reuse policy of the European Commission is implemented by a Commission Decision of 12 December 2011 on the reuse of commission documents (2011/833/EU)
Identifier	Re3gistry-v0.4
Language	EN



v0.5 roadmap includes RDF and .csv

<https://joinup.ec.europa.eu/software/re3gistry/home>

<http://inspire.ec.europa.eu/registry/>



INSPIRE REGISTRY
Enhancing access to European spatial data

European Commission > INSPIRE > INSPIRE registry



European Commission

About | Contact | Legal notice

English (en)

ARE3NA INSPIRE Registry

INSPIRE registry

ID: <http://inspire.ec.europa.eu/registry>

Language: **en**

Label: **INSPIRE registry**

Registry manager: **European Commission, Joint Research Centre**

Content Summary: The INSPIRE infrastructure involves a number of items, which require clear descriptions and the possibility to be referenced through unique identifiers. Examples for such items include INSPIRE themes, code lists, application schemas or discovery services. Registers provide a means to assign identifiers to items and their labels, definitions and descriptions (in different languages). The INSPIRE registry provides a central access point to a number of centrally managed INSPIRE registers. The content of these registers are based on the INSPIRE Directive, Implementing Rules and Technical Guidelines.

Other formats:  XML  JSON  Atom



<https://ies-svn.jrc.ec.europa.eu/projects/registry-development/wiki>

Βοήθεια Έργα Επισκόπηση Σύνδεση Εγγραφή

Αναζήτηση

INSPIRE > MIG Αρχική σελίδα



MIG permanent technical sub-group (MIG-T) » INSPIRE Registry

Επισκόπηση Δραστηριότητα Θέματα Ημερολόγιο Νέα Έγγραφα **Wiki** Αρχεία

Wiki

INSPIRE registry service

The INSPIRE registry provides a central access point to a number of centrally managed INSPIRE registers. The content of these registers are based on the INSPIRE Directive, Implementing Rules and Technical Guidelines.

The service is accessible through a RESTful interface described in the [INSPIRE registry help page](#).

Re3gistry software

The Re3gistry is a tool used to manage the data contained in the registry. It is made up of several components to store and to transform the data to some custom formats to be served by a web service.

The web service has a RESTful interface to access the data. You can access different formats and languages using content negotiation or directly calling the desired file.

The development plan for the future releases of the Re3gistry software is available in the [Re3gistry software development](#)

Wiki

Πρώτη σελίδα
Δείκτης ανά τίτλο
Δείκτης ανά ημερομηνία



- ✓ Extend and make Re3gistry more ready for reuse in the Member States
- ✓ Develop a European federation of INSPIRE Registries
- ✓ Represent INSPIRE in RDF (Linked Open Data)
- ✓ Governance issues on Persistent Identifiers for INSPIRE data

Improve the use of location information in e-Government services

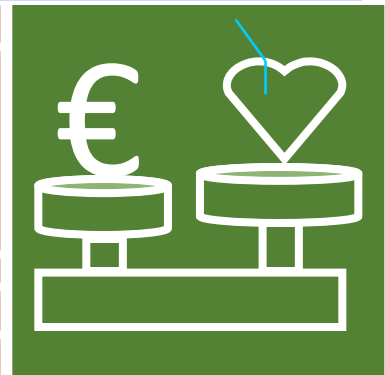
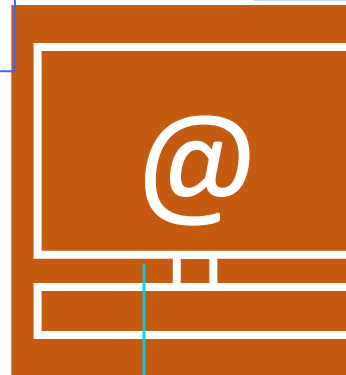
Policy and Strategy Alignment

where location plays a significant role.



Return on Investment

by minimizing costs and maximizing benefits for government, businesses and citizens.



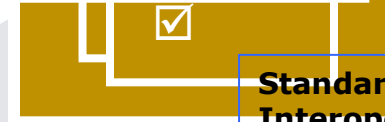
Effective Governance and Partnerships

ensuring that all stakeholders are involved, as contributors, as well as consumers.



e-Government Integration

with location information within the G2G, G2B and G2C processes.



Standardization and Interoperability

using geospatial and location-based standards and technologies.

Strategic vision

Shared **vision** and **rationale** for the EULF, defines its **scope** and highlights the governance and implementation approach.

Survey and Assessments

Assessment of the state of play in the five focus areas of the EULF.

Blueprint

Recommendations, guidelines, methodologies and **best practices** in the EULF focus areas.

References

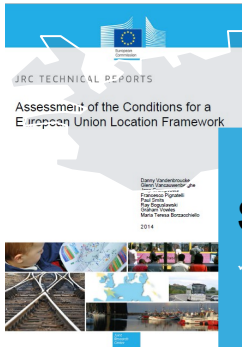
Provides inventories, links and supplementary information related to the EULF.

Roadmap

A high level **implementation plan** for the EULF.

Pilots

A series of pilot studies in various policy areas (**transport, marine** and **energy**), to both validate and contribute to the EULF.



Survey:

- ✓ Questions to MS on location-enablement of e-government
- ✓ Validating key issues
- ✓ Identifying best practices and gaps
- ✓ 25 Member States responded



Vision:

"More **effective e-services**, savings in time and money, and **increased growth and employment** will result from adopting a coherent European framework of guidance and actions to foster interoperable **cross-sector** and **cross-border** sharing and use of **location information**"

Assessment:

- ✓ Mixed picture across Europe - some good practices to learn from, some significant gaps
- ✓ Good evidence to contribute to Vision and Blueprint
- ✓ Helped confirm focus areas and priority actions

Transition Strategy:

- ✓ Current and future state for each focus area
- ✓ EULF actions
- ✓ Key benefits and beneficiaries and how to achieve them
- ✓ Key risks and how to deal with them
- ✓ How to link with the rest of ISA

JRC TECHNICAL REPORTS
European Union Location Framework
Blueprint

Overview Document
Draft version 0.15
JRC Technical Reports
European Union Location Framework
Blueprint
2014



Blueprint:

- ✓ Recommendations
- ✓ Actions
- ✓ Guidelines
- ✓ Methodologies
- ✓ Best practices
- ✓ Training



Pilots / Use Cases:

- ✓ Help validate and refine the EULF
- ✓ Demonstrate good practice in different sectors and services
- ✓ Involve multiple Member States
- ✓ Demonstrate role of INSPIRE
- ✓ Provide evidence of EULF benefits

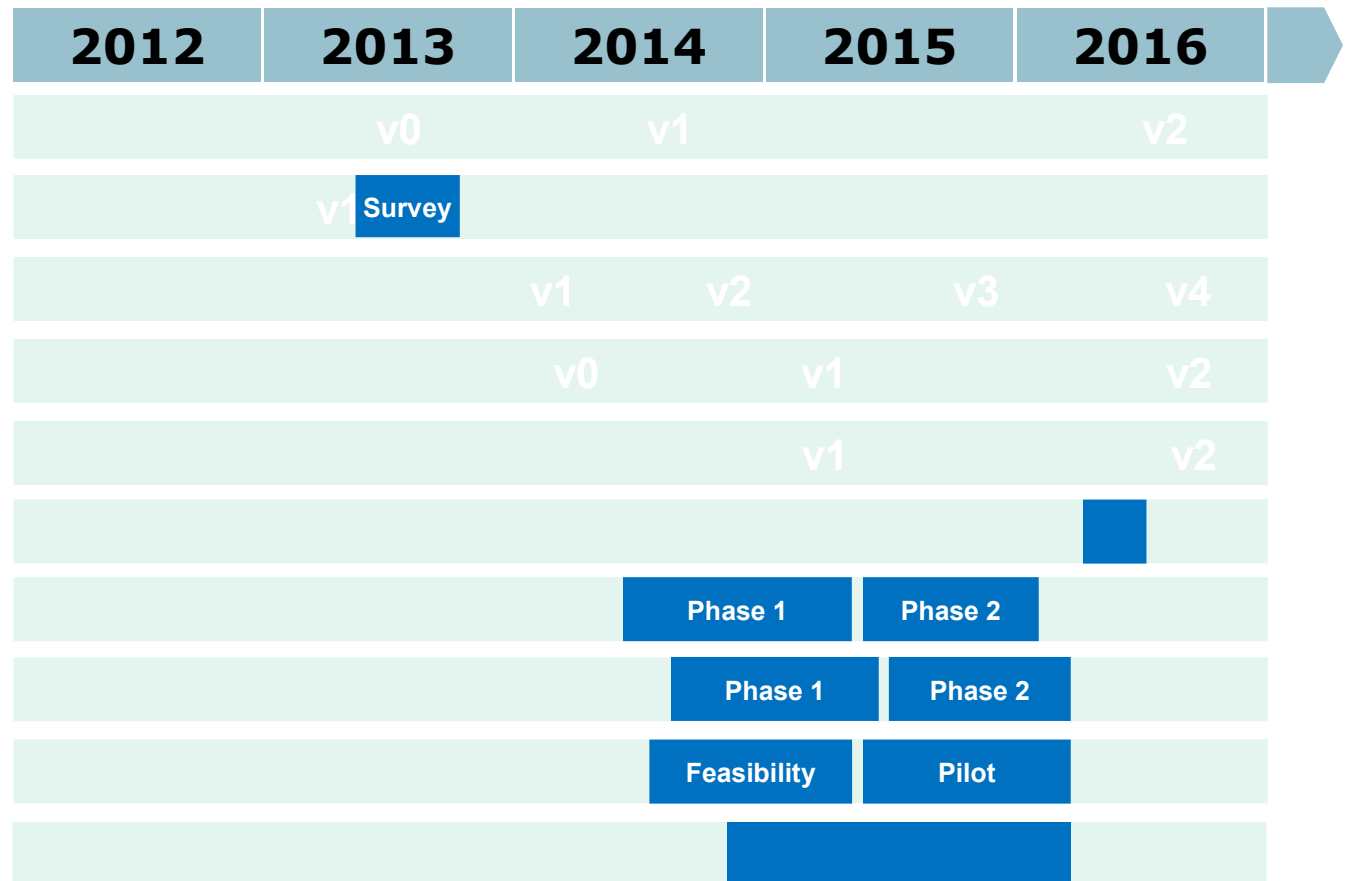
Measuring effectiveness and benefits: Outcomes / Impacts

Example topics:

- ✓ GI Standards for e-Government
- ✓ Procurement guidelines
- ✓ Checklists for policy alignment, service design
- ✓ Data policy guidance, including data governance, open data, core registers, data licensing
- ✓ EIRA location guidelines / inputs

Example scenarios:

- ✓ Transportation pilot relating to ITS Directive and road data
- ✓ Marine pilot relating to MSFD
- ✓ Energy pilot on energy performance of buildings
- ✓ Other use cases investigating policies, processes and relevant projects





- ✓ Better services
- ✓ Cost and time savings
- ✓ Effective policy development that leads to improved policy outcomes
- ✓ More open and transparent government
- ✓ Support to innovative research



 **Enabler = Interoperability**

Interoperability is a key enabler for the provision of efficient, low cost and secure Public Administrations' e-services at national and EU level

What interoperability really means



the ability of
disparate organisations,
to interact towards agreed goals,
by sharing information
through their business processes,
by means of exchanging data
between their IT systems



at all levels:
legal, organisational, semantic, technical,

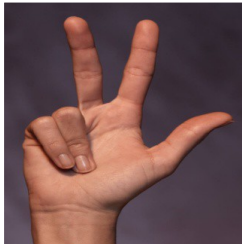


Duration? • 2010-2015



Who?

- Commission: DG DIGIT.B6
- Stakeholders: Other DGs and Members States



How?

- Programme based, via actions
- Revised every year
- Actions implemented by Framework Contracts or Call for Tenders

The life cycle of ISA actions

Implementation Annual request to Member
Commission - in co-operation with the Member States and Commission services
for proposals of actions.

Commission decision

Discussion of proposed
actions by the ISA committee.

Favorable opinion of the ISA committee:
Inclusion of the action within the work program

The ISA programme ends the 31st of December 2015. What is next?



Interoperability Solutions for European Public Administrations, Businesses and Citizens (ISA2) *Interoperability as a means for modernising the public sector*

Objective

- Facilitate electronic exchanges
- Cross border OR cross sector
- Public administrations, Citizens & Businesses

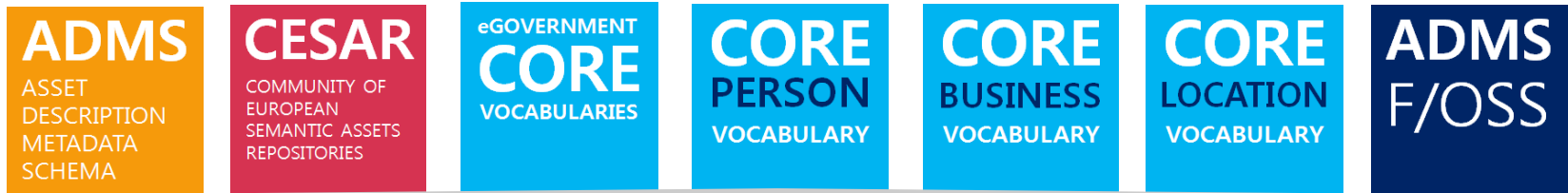
Scope

- Implement
- Pilot
- Sustain
IOP solutions

Budget

- 131 Meuro
- 2016-2020

Join ISA initiatives at:
http://ec.europa.eu/isa/index_en.htm
and @ <http://joinup.ec.europa.eu>



<http://goo.gl/eK1EY>



@SEMICEu



<http://joinup.ec.europa.eu>